



Project partners learn new ways of analyzing environmental factors and relationships that contribute to land degradation (Nandita Jain)

Eligibility Criteria and Environmental Planning Tools for SLM (Tajiquistão)

DESCRIÇÃO

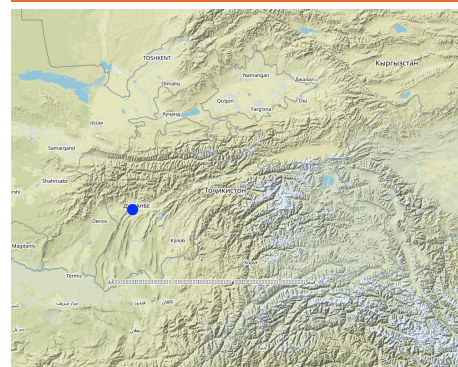
Using eligibility criteria and participatory environmental analyses for selecting and assessing SLM investments.

Aims / objectives: As part of the Community Agriculture and Watershed Management Project (CAWMP), tools were developed to ensure farmers chose appropriate SLM technologies while preparing Community Action Plans (CAPs) and to improve environmental assessments during CAP preparation and in rural investment activities.

Methods: Eligibility Criteria: CAWMP financed small grants for three types of rural production investments: farm productivity, rural infrastructure, and land resource management (the largest type). The eligibility criteria for these grants included meeting at least one of the following impacts on fragile lands: • Prevent/reduce soil erosion • Increase vegetative cover through perennial crops and pasture • Provide soil and moisture conservation • Improve soil quality • Improve water use efficiency • Increase sustainable fodder/wood supply • Increase sustainable renewable energy supply • Increase integrated pest management These criteria ensured an environmental focus, and kept the grant proposals consistent with a list of eligible activities which is critical for a large-scale, community-driven project such as CAWMP. The criteria helped avoid diversion of grant funds to investments not directly related to land sustainability. Combining income-generating investments with environmental criteria encouraged sustainable land use by addressing vital interests of local people. The criteria were used to monitor local environmental impacts. Project arrangements provided for land use right certificates to beneficiaries with Project-financed investments on sloping lands, giving them a stake in the sustained productivity of their land. Traditionally such land use right certificates were issued only for irrigated and other valley areas. The Project financed a total of almost US\$ 5.3 million in grants for land resource management, through almost 2,300 subprojects, benefitting over 43,000 households.

Stages of implementation: Participatory environmental analyses. A review of investment proposals and field activities in 2007 revealed that farmers were not capable of properly assessing their local land management problems, identifying the most environmentally appropriate investments or actions, nor monitoring their effectiveness. Tools were developed for project partners and officials to address these concerns including: 1) Developing Conceptual Models of Local Environments/Watersheds; 2) Mapping Local Environments/Watersheds and Associated Threats; 3) Identifying and Ranking Environmental Threats; and 4) Community Environmental Assessment. More than 50 persons attended the two-day interactive training course on the use of the tools. Detailed guidelines for facilitators and trainers to use the tools were prepared in Tajik and Russian. While the training could not influence many of the SLM-related investments already submitted for funding, participants urged that similar training be conducted at the inception of SLM-related projects and that the tools be requirements of SLM planning.

LOCALIZAÇÃO



Localização: Jirgital, Tajikibad, Vanj, Aini, Matcha, Penjikent, Danghara, Sughd, RRS, Khatlon, GBAO, Tajiquistão

Geo-referência de locais selecionados

- 68.683, 38.499

Data de início: 2005

Ano de término: 2012

Tipo de abordagem

- ☐ Tradicional/Indígena
- ☐ Iniciativa/Inovação local recente
- ☒ Baseado em projeto/programa



Project partners learn new ways of analyzing environmental factors and relationships that contribute to land degradation. (Nandita Jain)

OBJETIVOS DE APROXIMAÇÃO E AMBIENTE PROPÍCIO

Principais metas / objetivos da abordagem

The Approach focused mainly on other activities than SLM (participatory environmental analyses, eligibility criteria, monitoring, assessment, training, guidelines,)

Application of the criteria and tools to help ensure that proposed rural investments in Community Action Plans kept their environmental management focus.

The SLM Approach addressed the following problems: Inappropriate investments with questionable SLM benefits proposed in CAPs. Uneven, sometimes, missing focus on environmental risks and benefits in small grant proposals for rural production investments. Lack of skills in and knowledge of participatory environmental appraisals.

Condições que permitem a implementação da Tecnologia(s) aplicada(s) sob a Abordagem

Condições que dificultam a implementação da Tecnologia(s) aplicada(s) sob a Abordagem

- **Quadro institucional:** Legacy of command-economy focus on infrastructure investments for improving land management and agriculture Treatment through the SLM Approach: Tools to analyse a range of environmental aspects of land management and propose alternative technologies and approaches, training for project implementers and stakeholders.
- **Conhecimento sobre GST, acesso a suporte técnico:** Lack of appropriate analyses of environmental relationships, threats, risks and impacts in choice and design of investment proposals at the village level Treatment through the SLM Approach: Establishing eligibility criteria, development of participatory learning tools on environmental issues, training for project partners and stakeholders.

PARTICIPAÇÃO E PAPEL DAS PARTES INTERESSADAS ENVOLVIDAS

Partes interessadas envolvidas na abordagem e seus papéis

| Que partes interessadas/órgãos de implementação estavam envolvidos na abordagem? | Especifique as partes interessadas | Descreva o papel das partes interessadas |
|--|--|--|
| Usuários de terra/comunidades locais | Jamoat (Sub-district) Development Committees | |
| Especialistas em GST/ consultor agrícola | | Facilitating organization staff, local government specialists, project field staff |
| Governo nacional (planejadores, responsáveis pelas decisões) | Project Management Unit (PMU), Project Coordination Units (PCUs) | |

Agência líder
PMU

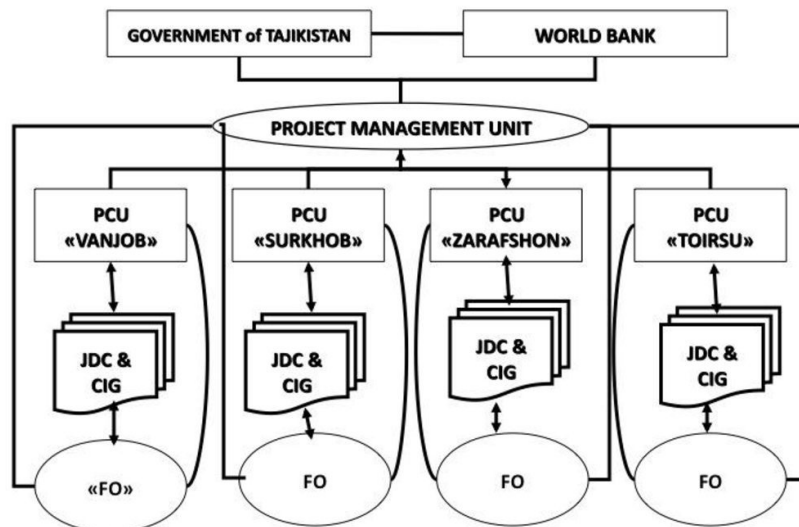
Envolvimento do usuários de terra/comunidades locais nas diferentes fases da abordagem

| | Nenhum | Passivo | Apoio externo | Participativo | Automobilização |
|-------------------------|--------|---------|---------------|---------------|-----------------|
| Iniciação/motivação | ✓ | | | | |
| Planejamento | ✓ | | | | |
| Implementação | | | | ✓ | |
| Monitoramento/avaliação | | | | ✓ | |
| Research | ✓ | | | | |

Villagers used criteria for selecting and designing rural investments.
JDCs received training in environmental tools
Local JDCs assisted in assessment of rural production investments using eligibility criteria as well as other factors.

Fluxograma

CAWMP - Implementation Arrangements and Project Partners



Autor: Project Management Unit (Dushanbe)

Tomada de decisão sobre a seleção da Tecnologia GST

As decisões foram tomadas por

- ☐ Somente usuários da terra (iniciativa própria)
- ☒ Principalmente usuários da terra, apoiados por especialistas em GST
- ☐ todos os atores relevantes, como parte de uma abordagem participativa
- ☐ Principalmente especialistas em GST, após consulta com usuários da terra
- ☐ Somente especialistas em GST
- ☐ Políticos/Líderes

As decisões foram tomadas com base em

- ☐ Avaliação de conhecimento bem documentado de GST (tomada de decisão baseada em evidências)
- ☐ Resultados de pesquisa
- ☐ Experiência pessoal e opiniões (não documentado)

SUPOORTE TÉCNICO, REFORÇO DAS CAPACIDADES E GESTÃO DO CONHECIMENTO

As seguintes atividades ou serviços têm sido parte da abordagem

- ☒ Reforço das capacidades/ formação
- ☐ Serviço de consultoria
- ☒ Fortalecimento da instituição (desenvolvimento organizacional)
- ☒ Monitoramento e avaliação
- ☐ Pesquisa

Reforço das capacidades/formação

Foi fornecido treinamento às seguintes partes interessadas

- ☐ Usuários de terra
- ☒ Equipe de campo/consultores
- ☒ Jamoat (sub-district) Development Committees

Tipo de formação

- ☐ Em exercício
- ☐ Agricultor para agricultor
- ☐ Áreas de demonstração
- ☐ Reuniões públicas
- ☐ Cursos

Assuntos abordados

Participatory environmental analyses, assessing rural investments including use of eligibility criteria.

Fortalecimento institucional

As instituições foram fortalecidas / estabelecidas

- ☐ Não
☐ Sim, pouco
☒ Sim, moderadamente
☐ Sim, significativamente

no seguinte nível

- ☒ Local
☐ Regional
☐ Nacional

Descreva instituição, papéis e responsabilidades, membros, etc.

Tipo de apoio

- ☐ Financeiro
☐ Reforço das capacidades/ formação
☐ Equipamento

Mais detalhes

See TAJ047 on the role and activities of Jamoat (sub-district) Development Committees

Monitoramento e avaliação

Use of tools aspects were ad hoc monitored by project staff through observations; indicators: Types of investments proposed, Quality of proposals, Application of criteria aspects were regular monitored by project staff through observations; indicators: Types of proposals, use in assessment of rural investments There were no changes in the Approach as a result of monitoring and evaluation: Not directly relevant There were no changes in the Technology as a result of monitoring and evaluation: No directly relevant

FINANCIAMENTO E APOIO MATERIAL EXTERNO

Orçamento anual em USD para o componente GST

- ☐ < 2.000
☐ 2.000-10.000
☒ 10.000-100.000
☐ 100.000-1.000.000
☐ > 1.000.000
 Precise annual budget: n.a.

Approach costs were met by the following donors: international (World Bank and Global Environment Facility): 95.0%; government (Estimate of co-financing): 5.0%

Os seguintes serviços ou incentivos foram fornecidos aos usuários de terras

- ☐ Apoio financeiro/material concedido aos usuários da terra
☐ Subsídios para insumos específicos
☐ Crédito
☐ Outros incentivos ou instrumentos

ANÁLISE DE IMPACTOS E DECLARAÇÕES FINAIS

Impactos da abordagem

A abordagem auxiliou os usuários da terra a implementar e manter as tecnologias de GST?
More appropriate investments chosen, criteria contributed to environmental monitoring of rural investments.

- ☐ Não
☐ Sim, pouco
☒ Sim, moderadamente
☐ Sim, significativamente

Did other land users / projects adopt the Approach?
Interest shown by organisations and projects in participatory tools.

- ☐ Não
☒ Sim
☐ Incerto

Principal motivação dos usuários da terra para implementar a GST

- ☒ Produção aumentada
☐ Lucro (lucratividade) aumentado, melhora da relação custo-benefício
☐ Degradação do solo reduzida
☐ Riscos de desastre reduzido
☐ Carga de trabalho reduzida
☐ Pagamentos/subsídios
☐ normas e regulamentos (multas)/aplicação
☐ Prestígio, pressão social/coesão social
☒ Afiliação a movimento/projeto/grupo/rede
☒ Consciência ambiental
☐ Costumes e crenças, moral
☐ melhoria dos conhecimentos e aptidões de GST
☐ Melhoria estética
☐ Atenuação de conflitos
☒ well-being and livelihoods improvement

Atividades de sustentabilidade de abordagem

Os usuários da terra podem sustentar o que foi implementado através da Abordagem (sem apoio externo)?

- ☐ Não
☒ Sim
☐ Incerto

Land-users may require facilitation assistance to conduct environmental analyses, but some individuals and groups may be able to do so independently. Some JDC members may be able to assist. Eligibility criteria along with list of activities can be used in other projects or independently by beneficiaries.

CONCLUSÕES E EXPERIÊNCIAS ADQUIRIDAS

Pontos fortes: visão do usuário de terra

- JDCs learned more about environmental relationships, impacts beyond immediate areas, as well as biodiversity aspects of SLM. Also resulted in shifts in thinking about causes of degradation and effects, and so the choice of appropriate activities (How to sustain/ enhance this strength: Ensure that training in the tools, monitoring and related activities are given at the start of projects and programmes.)

Pontos fortes: a visão do/a compilador/a ou de outra pessoa capacitada

- Criteria were understandable and integrated into monitoring of project rural investments. (How to sustain/ enhance this strength:

Pontos fracos/desvantagens/riscos: visão do usuário de terracomo superar

Pontos fracos/desvantagens/riscos: a visão do/a compilador/a ou de outra pessoa capacitadacomo superar

- Limited impact of tools training due to project implementation schedule. Provide training in initial stages of projects.

Disseminate formats for investment monitoring. Criteria can be also be integrated into appraisal stages for rural investments.)

- Tools highlighted environmental issues neglected during initial participatory rural appraisals. (How to sustain/ enhance this strength: Continue dissemination of tools, and further refine some tools as needed.)

REFERÊNCIAS

Compilador/a
Nandita Jain

Editores

Revisor
David Streiff
Alexandra Gavilano
Joana Eichenberger

Data da documentação: 24 de Maio de 2011

Última atualização: 2 de Novembro de 2021

Pessoas capacitadas

Nandita Jain (njain3@netzero.com) - Especialista em GST
Jessica Mott - Especialista em GST

Descrição completa no banco de dados do WOCAT

https://qcat.wocat.net/pt/wocat/approaches/view/approaches_2578/

Dados GST vinculados

Technologies: https://qcat.wocat.net/pt/wocat/technologies/view/technologies_3850/

A documentação foi facilitada por

Instituição

- World Bank (World Bank) - Estados Unidos

Projeto

- Pilot Program for Climate Resilience, Tajikistan (WB / PPCR)

Referências-chave

- Environmental Assessment Templates for Rural Production Investments in CAWMP (2009, English, Russian and Tajik)Tools for Participatory Environmental Analyses (2007, Separate Guidelines for Trainers and Facilitators, English, Russian and Tajik)Eligible and Ineligible Activities for Rural Production Investments in CAWMP (2007, English and Russian)Outline and Assessment for Training in Tools for Participatory Environmental Analyses (2007, English): Project Management Unit
- Tools for Participatory Environmental Analyses (2007, Separate Guidelines for Trainers and Facilitators, English, Russian and Tajik): Project Management Unit
- Eligible and Ineligible Activities for Rural Production Investments in CAWMP (2007, English and Russian): Project Management Unit
- Outline and Assessment for Training in Tools for Participatory Environmental Analyses (2007, English): Project Management Unit

This work is licensed under [Creative Commons Attribution-NonCommercial-ShareAlike 4.0 International](#)

